

SEATRAX®

Equipment Protection

Competitor: Power Unit with Engine Cover



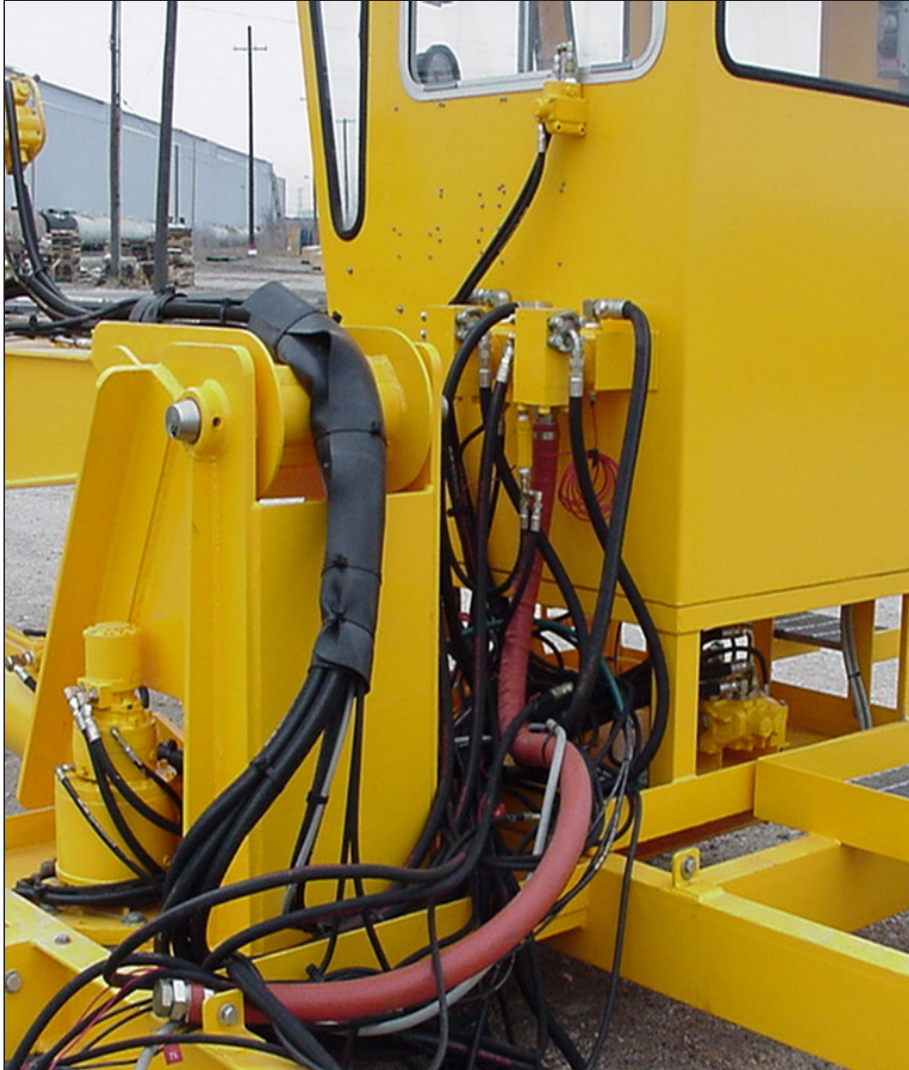
Poor access and protection for the equipment

Seatrax: Fully Enclosed Machinery Room



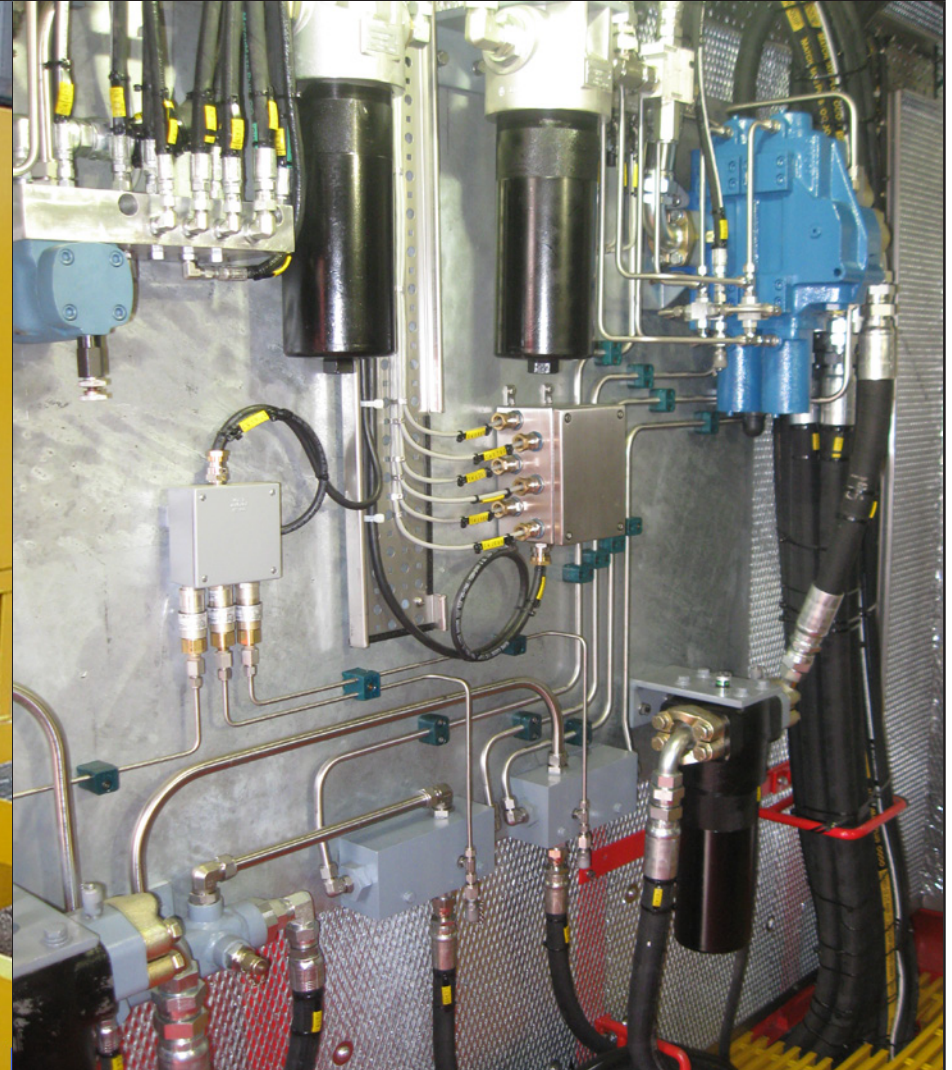
Great protection for the high-use machinery

Competitor: Power Unit with Engine Cover



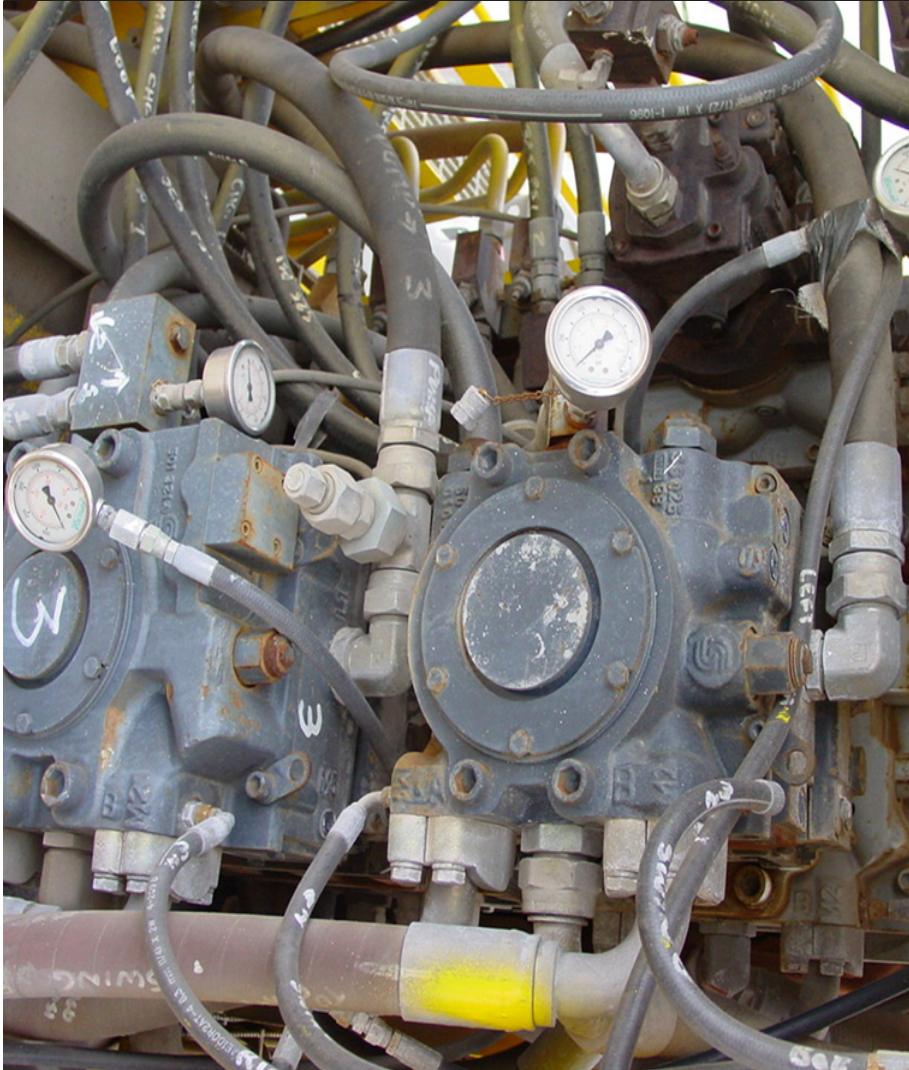
No protection or aesthetic mounting for controls and hoses

Seatrax: Fully Enclosed Machinery Room



Good protection for the controls and hoses, components and controls easy to work on

Competitor: Power Unit with Engine Cover



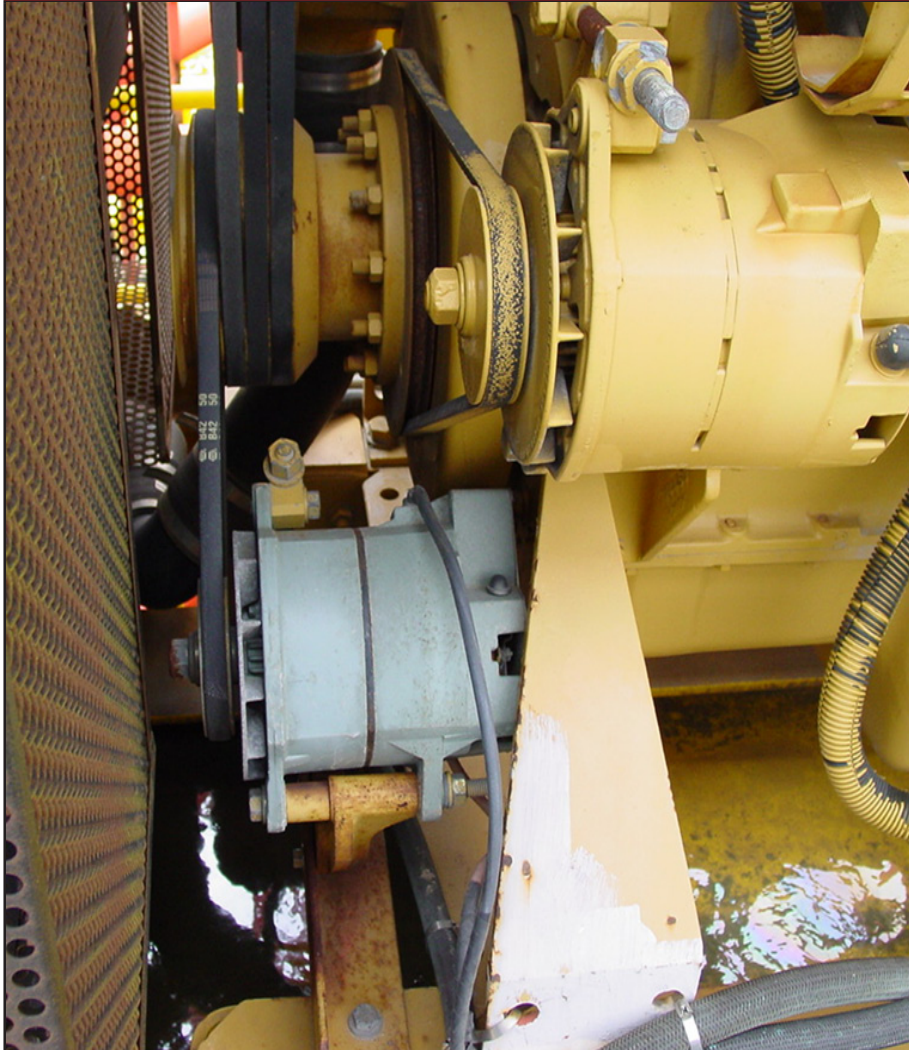
Lack of space makes hose and pipe arrangements difficult to work on.

Seatrax: Fully Enclosed Machinery Room



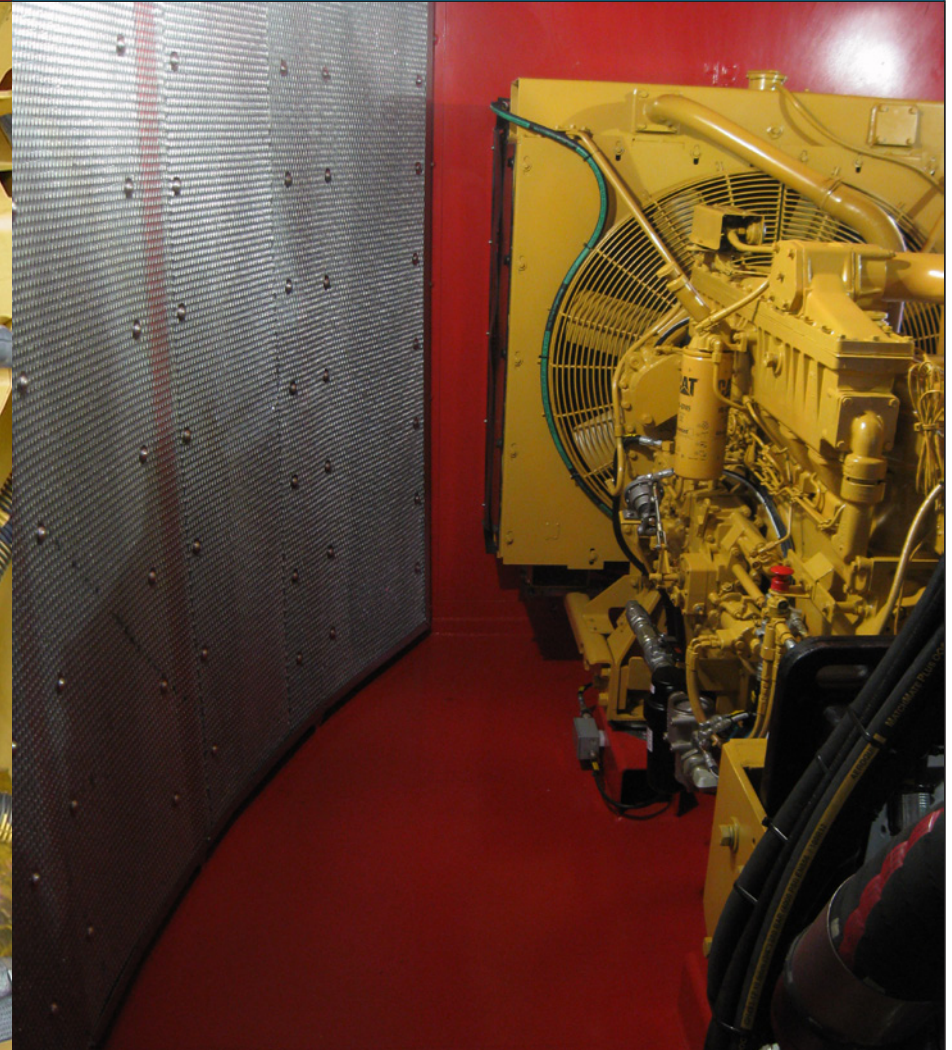
Ample space is provided for neat, simple to work on arrangements.

Competitor: Power Unit with Engine Cover



Poor protection for the equipment from weather and the elements. Lack of insulation makes operation of the crane noisy.

Seatrax: Fully Enclosed Machinery Room



Great protection from weather and the elements. Full insulation makes operation of crane quiet and comfortable for operator.